

**POLYCLONAL ANTIBODY**

For research use only, Not for diagnostic use

Catalog No. TIP-TM-P01**Anti TMEM106B (239-250)****BACKGROUND**

Transmembrane protein 106B (TMEM106B) is a type II transmembrane protein of 274 residues that localizes to late endosomes and lysosomes. It is expressed ubiquitously, with the highest levels in the brain, heart, thyroid, adrenal and testis. Recently, the luminal domain of TMEM106B was found to form amyloid filaments in the human brain, confirming that the filament consists of residues 120-254 of TMEM106B. TMEM106B filaments were observed in the brains of individuals with familial and sporadic tauopathy, A β amyloidosis, synucleinopathy, and TDP-43 proteinopathy, as well as in the brains of normal elderly individuals, but not in the brains of younger individuals.

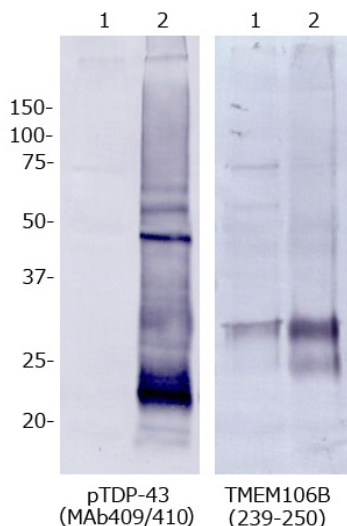
Product type	Primary antibody
Immunogen	HSEQISQERYQY (Human TMEM106B His239-Tyr250)
Raised in	Rabbit
Myeloma	-
Clone number	-
Isotype	-
Source	Serum
Purification	Ammonium sulfate precipitation
Form	Liquid containing 50% glycerol with 0.05% NaN ₃ as a preservative.
Concentration	-
Volume	100 μ L
Label	Unlabeled
Specificity	TMEM106B
Cross reactivity	Human
Storage	Store below -20°C.

Application notes	<ul style="list-style-type: none">• Western blotting: 1/500 - 1/3000• Immunohistochemistry: 1/500- 1/3000
Recommended dilutions	

Other applications have not been tested.
Optimal dilutions/concentrations should be determined by the end user.

References	1) Schweighauser, M. et al. Age-dependent formation of TMEM106B amyloid filaments in human brains. Nature 605, 310-314 (2022). PMID 35344985
-------------------	--

ANTIBODY CHARACTERIZATION



1. Control Sarkosyl-ppt, 2. FTLD Sarkosyl-ppt

Figure 1 Western blot analysis of human brain extract using anti-TMEM106B (239-250) antibody or anti-pTDP-43 antibody (Cat.No TIP-PTD-M01A).

Lane 1: Control Sarkosyl-ppt (Sarkosyl-insoluble fraction prepared from normal elderly brain).

Lane 2: Frontotemporal lobar degeneration (FTLD) Sarkosyl-ppt (Sarkosyl-insoluble fraction prepared from FTLD brain).

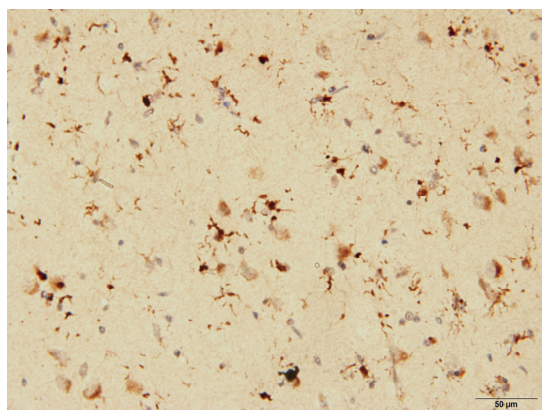


Figure 2 Immunohistochemical analysis of a brain section from Argyrophilic Grain Disease (AGD) using anti-TMEM106B (239-250) antibody.

TMEM106 filaments, globular cytoplasmic inclusions in the AGD brain, were detected with the anti-TMEM106B (239-250) antibody.

RELATED PRODUCTS

Product Name	Quantity	Maker	Cat#
Anti TDP-43, phospho Ser409/410 Monoclonal Antibody	100 uL	CAC	TIP-PTD-M01A
Anti TDP-43, phospho Ser409 Polyclonal Antibody	100 uL	CAC	TIP-PTD-P03
Anti TDP-43, phospho Ser410 Polyclonal Antibody	100 uL	CAC	TIP-PTD-P04
Anti TDP-43, phospho Ser409/410 Polyclonal Antibody	100 uL	CAC	TIP-PTD-P07

For research use only, Not for diagnostic use.



COSMO BIO Co., LTD.

[JAPAN]

TOYO EKIMAE BLDG. 2-20, TOYO 2-CHOME,
KOTO-KU. TOKYO 135-0016, JAPAN
Phone: +81-3-5632-9610
FAX: +81-3-5632-9619
URL: <https://www.cosmobio.co.jp/>



COSMO BIO USA

[Outside Japan]

2792 Loker Ave West, Suite 101
Carlsbad, CA 92010, USA
email: info@cosmobioussa.com
Phone/FAX: (+1) 760-431-4600
URL: www.cosmobioussa.com